

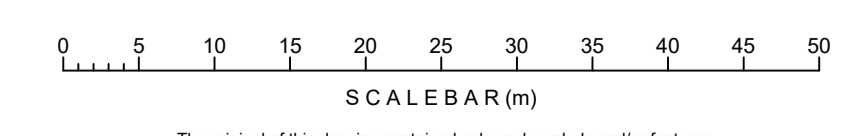
DO NOT SCALE



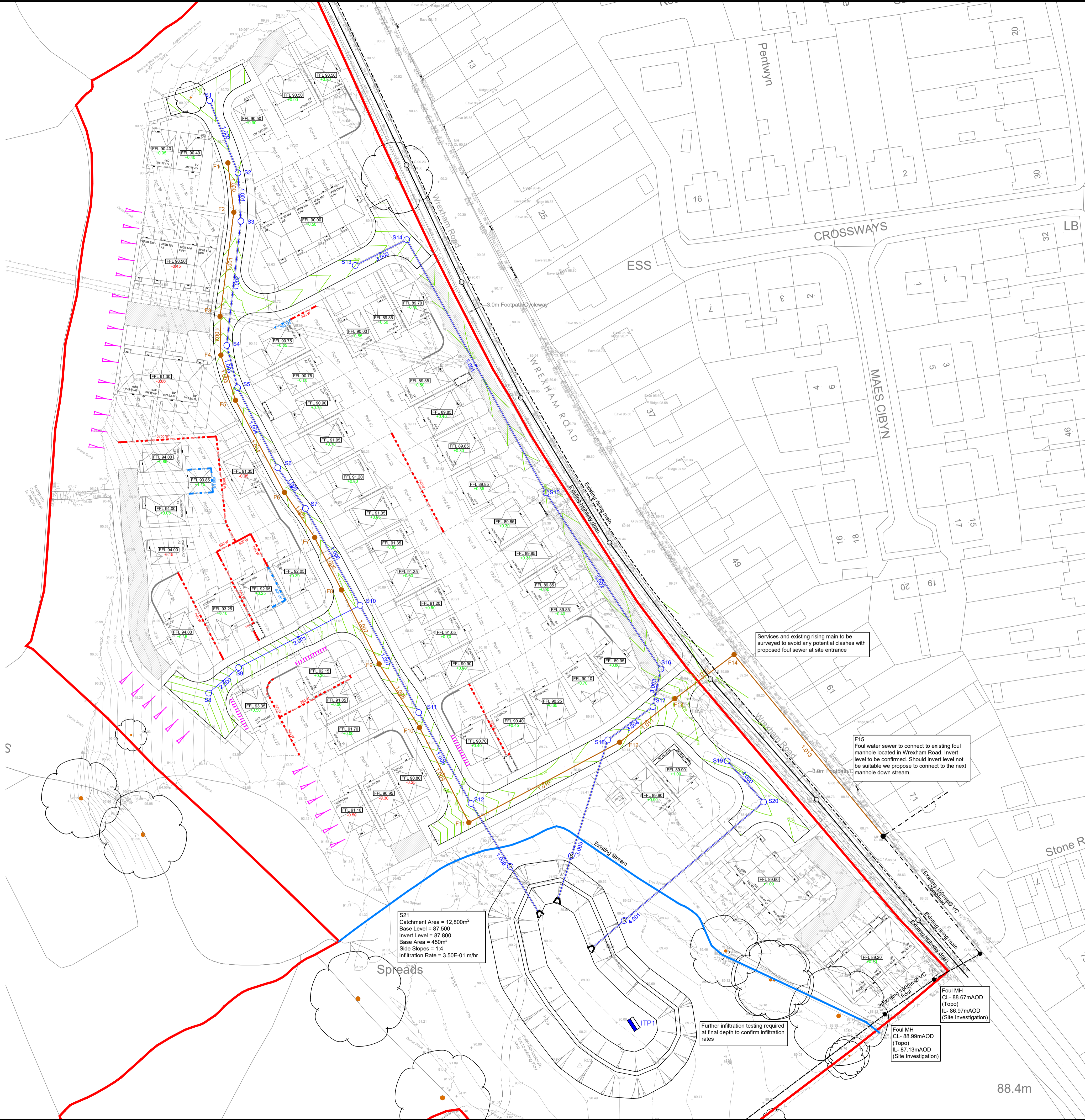
S100 Network 2											
Pipe Code	Diameter (mm)	Gradient (1:1)	Pipe Type	Pipe Length	Number	Upstream Manhole	Number	Downstream Manhole	Number	Number	Cover
1.001	400	300	CONC	19.544	01	88.360	00.64	02	88.200	00.300	
1.002	400	400	CONC	13.180	03	88.320	00.20	03	88.200	00.154	
1.003	400	300	CONC	31.007	04	88.290	00.104	04	88.210	00.790	
1.004	400	400	CONC	23.300	05	88.180	00.300	05	88.120	01.241	
1.005	400	400	CONC	15.420	06	88.120	01.241	06	88.080	01.471	
1.006	400	400	CONC	28.037	07	88.090	01.471	07	88.020	01.999	
1.007	400	400	CONC	20.796	08	88.050	01.999	08	87.790	00.000	
1.008	400	400	CONC	26.482	09	87.940	01.000	09	87.830	00.300	
1.009	400	400	CONC	33.674	10	87.830	00.300	10	87.760	00.000	
1.010	400	300	CONC	41.491	11	87.790	00.000	11	87.690	00.000	
1.011	400	400	CONC	10.000	12	87.690	00.000	12	87.690	00.000	
2.000	225	180	CLAY	9.954	08	91.170	03.613	09	91.117	03.126	
2.001	225	200	CLAY	24.348	09	91.117	03.126	10	90.840	03.690	
3.000	400	400	CONC	14.526	13	88.310	00.000	14	88.240	00.812	
3.001	400	400	CONC	23.004	14	88.300	00.812	15	88.260	00.300	
3.002	400	300	CONC	53.010	15	88.101	00.300	16	87.940	00.336	
3.003	400	400	CONC	3.600	16	87.940	00.336	17	87.940	00.000	
3.004	400	400	CONC	14.180	17	87.944	00.000	18	87.900	00.207	
3.005	400	300	CONC	43.760	18	87.900	00.207	19	87.760	00.000	
4.000	400	300	CONC	13.851	19	87.860	00.100	20	87.840	00.000	
4.001	400	400	CONC	38.479	20	87.840	00.000	21	87.790	00.000	

FOUL Network 2											
Pipe Code	Diameter (mm)	Gradient (1:1)	Pipe Type	Pipe Length	Number	Upstream Manhole	Number	Downstream Manhole	Number	Number	Cover
1.000	100	80	CLAY	12.443	F1	88.970	00.204	F2	88.713	00.143	
1.001	100	150	CLAY	20.466	F2	88.713	00.143	F3	88.507	00.872	
1.002	100	150	CLAY	3.720	F3	88.507	00.872	F4	88.372	00.800	
1.003	100	150	CLAY	11.964	F4	88.472	00.800	F5	88.300	01.032	
1.004	100	150	CLAY	20.004	F5	88.300	01.032	F6	88.217	01.386	
1.005	100	150	CLAY	13.728	F6	88.217	01.386	F7	88.120	01.960	
1.006	100	150	CLAY	30.726	F7	88.120	01.960	F8	87.987	01.420	
1.007	100	150	CLAY	16.014	F8	87.987	01.420	F9	87.790	00.360	
1.008	100	150	CLAY	20.000	F9	87.790	00.360	F10	87.690	00.000	
1.009	100	150	CLAY	43.000	F10	87.690	00.000	F11	87.200	00.128	
1.010	100	150	CLAY	13.748	F11	87.200	00.128	F12	87.150	00.572	
1.011	100	150	CLAY	18.574	F12	87.150	00.572	F13	87.051	00.980	
1.012	100	150	CLAY	07.624	F13	87.051	00.980	F14	86.400	00.200	

Design based on Layout:  
Wrexham Road, Abermorddu - Site Layout  
Dwg No. ABMRD-SP.01, dated 19/02/20  
Rev: B  
Grid/Level datum based on Topo:  
Wrexham Road, Abermorddu - Topo Survey Dwg. No. 7558/01,  
dated 06/07/16 Rev: -



© Copyright The original of this drawing contained coloured symbols and/or features. Any black and white reproduction should not be relied upon.



**Legend**

- Site Boundary
- Existing Highway drain
- Existing Rising Main
- Existing Foul Sewer
- Existing Combined
- Proposed Surface Water Sewer
- Adoptable Foul Sewer
- Silt trap
- Slab Level
- Retaining Wall
- Underbuild
- Depth of fill (Existing levels to proposed)

# STRATEGY

A	24.08.22	Full redesigned for communal soakaway	JAR	AJ
Rev.	Date	Revision	By	Appd.

**coopers**  
chartered consulting engineers

Tel: 01244 684910  
Email: admin@coopers.co.uk  
Web: http://coopers.co.uk

Park House  
Sandpiper Court  
Chester Business Park  
Chester  
CH4 9QU

Client

**Castle Green**

Project

**WREXHAM ROAD  
ABERMORDDU, FLINTSHIRE**

Title

**Drainage Strategy**

DRAWING NUMBER	SCALE at A1	1:500
7896 / SK02	DATE	Dec 2021
	DRAWN	PW
	CHECKED	AJ
	REVISION	A