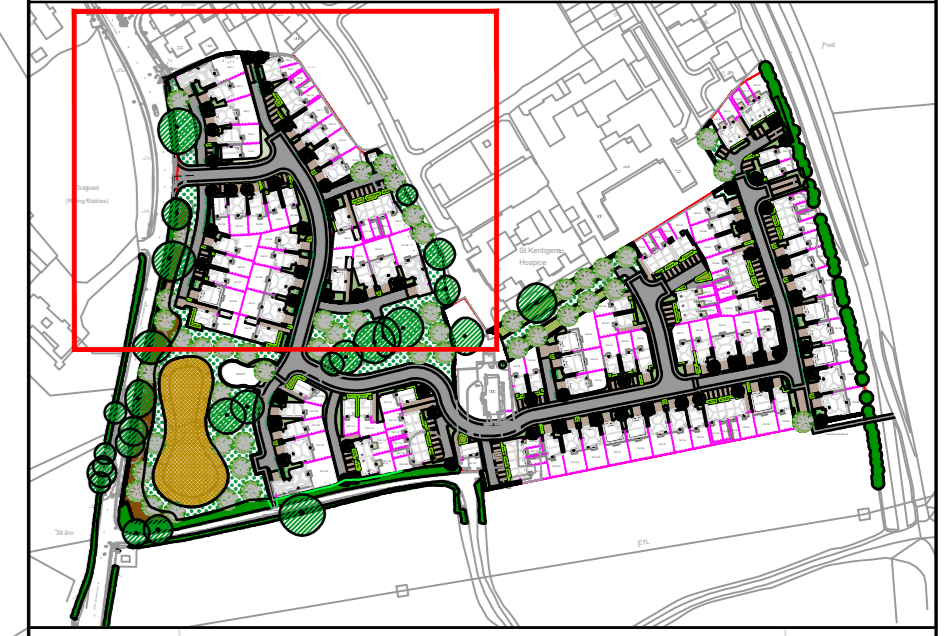
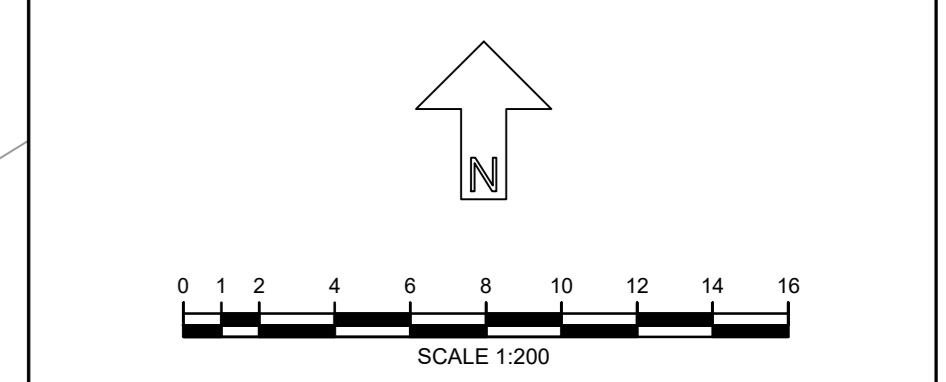




Dolgoed
(ding Stables)

DO NOT SCALE
ALL COORDINATES RELATED TO LOCAL GRID LOCATED TO OS NG BY BEST FIT TO DETAIL. EXTRACTED FROM OS DIGITAL DATA.
© This drawing, including the design and technical information contained on it, is the property of Ascorta. The drawing may only be used for the specific purpose for which it has been intended and may not be reproduced or copied without prior permission.

- Landscape Layout Key:**
- Site Boundary
 - Existing trees and vegetation to be retained and protected during the works.
 - Existing hedgerow to be retained.
 - Proposed ornamental planting on 400mm depth of topsoil with 75mm bark mulch.
 - Proposed native tree planting, tree pit and stake as detailed in the specification.
 - Small ornamental tree planting, tree pit and stake as detailed in the specification.
 - Proposed single or mixed native hedgerow planted in a double staggered row at 0.33m centres and 0.3 offset. Bare root transplants, each with a 60cm high Tubex shrub shelter, two cable ties and a timber stake.
 - Proposed single species formal hedge planted in a single row at 0.33 centres (3 no. plants per linear metre). Container transplants.
 - Front gardens to be turfed on 150mm topsoil.
 - Public open space to be sown with Germinal Aberystwyth mix or similar approved, to be sown at a rate of 40g/m2 on 150mm topsoil.
 - Public open space to be sown with Germinal Eco Species Rich Lawn mix, or similar approved, to be sown at a rate of 10g/m2 on 150mm topsoil.
 - Native woodland planting to be planted as 60-80cm whip planting at 2m centres, for additional wildlife habitat.
 - Native scrub planting to be planted as 60-80cm whip planting at 1m centres, for additional wildlife habitat.
 - Wildflower seeding, Germinal RE3 River Floodplain / Water Meadow (MGB Grassland), to the existing water course to public open space to be sown at 5g/m2.
- Paving Key:**
- Main roads, private drives and public footpaths including raised/ feature junctions and ramps/ transition strips to be tarmac.
 - Plot driveways and parking spaces- Private driveways and parking spaces in Mona Precast Monopave concrete block paving in 'Bridle', with contrasting blocks in 'Charcoal' to demark parking spaces or similar approved.
 - Private pathways and patios to be Mona Precast Monopave Slab concrete paving slabs in 'Buff' or similar approved.
- Boundary key:**
- 1.8m high screen wall/fence
 - 1.8m timber close boarded fence to side and rear



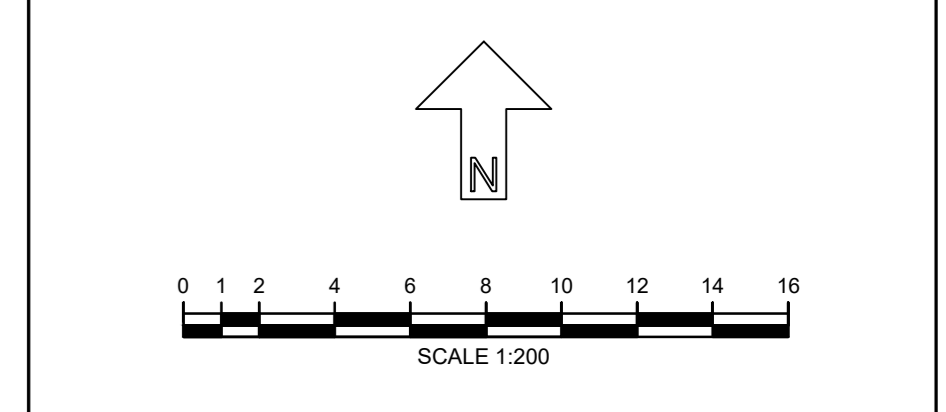
REV	DESCRIPTION	DATE
<p>Ascorta Landscape Trees Ecology t: 0845 463 4404 e: info@landscapetreecology.com www.landscapetreecology.com</p>		

CLIENT: Castle Green Homes
PROJECT: Upper Denbigh Road, St Asaph
DRAWING TITLE: Landscape Layout
Sheet 1 of 4
SCALE: 1:200 @ A0
DRAWN BY: CN
CHKD BY: CP
DATE: 21/09/2021
P: 1521.21.03



DO NOT SCALE
 ALL COORDINATES RELATED TO LOCAL GRID LOCATED TO OS NG BY BEST FIT TO DETAIL EXTRACTED FROM OS DIGITAL DATA.
 © This drawing, including the design and technical information contained on it, is the property of Ascerta. The drawing may only be used for the specific purpose for which it has been intended and may not be reproduced or copied without prior permission.

- Landscape Layout Key:**
- Site Boundary
 - Existing trees and vegetation to be retained and protected during the works.
 - Existing hedgerow to be retained.
 - Proposed ornamental planting on 400mm depth of topsoil with 75mm bark mulch.
 - Proposed native tree planting, tree pit and stake as detailed in the specification.
 - Small ornamental tree planting, tree pit and stake as detailed in the specification.
 - Proposed single or mixed native hedgerow planted in a double staggered row at 0.33m centres and 0.3 offset. Bare root transplants, each with a 60cm high Tubex shrub shelter, two cable ties and a timber stake.
 - Proposed single species formal hedge planted in a single row at 0.33 centres (3 no. plants per linear metre). Container transplants.
 - Front gardens to be turfed on 150mm topsoil.
 - Public open space to be sown with Germinial Aberystwyth mix or similar approved, to be sown at a rate of 40g/m2 on 150mm topsoil.
 - Public open space to be sown with Germinial Eco Species Rich Lawn mix, or similar approved, to be sown at a rate of 10g/m2 on 150mm topsoil.
 - Native woodland planting to be planted as 60-80cm whip planting at 2m centres, for additional wildlife habitat.
 - Native scrub planting to be planted as 60-80cm whip planting at 1m centres, for additional wildlife habitat.
 - Wildflower seeding, Germinial RE3 River Floodplain / Water Meadow (MGS Grassland), to the existing water course to public open space to be sown at 5g/m2.
- Paving Key:**
- Main roads, private drives and public footpaths including raised/ feature junctions and ramps/ transition strips to be tarmac.
 - Plot driveways and parking spaces- Private driveways and parking spaces in Mona Precast Monopave concrete block paving in 'Brendle', with contrasting blocks in 'Charcoal' to demark parking spaces or similar approved.
 - Private pathways and patios to be Mona Precast Monopave Slab concrete paving slabs in 'Buff' or similar approved.
- Boundary key:**
- 1.8m high screen wall/fence
 - 1.8m timber close boarded fence to side and rear



REV	DESCRIPTION	DATE

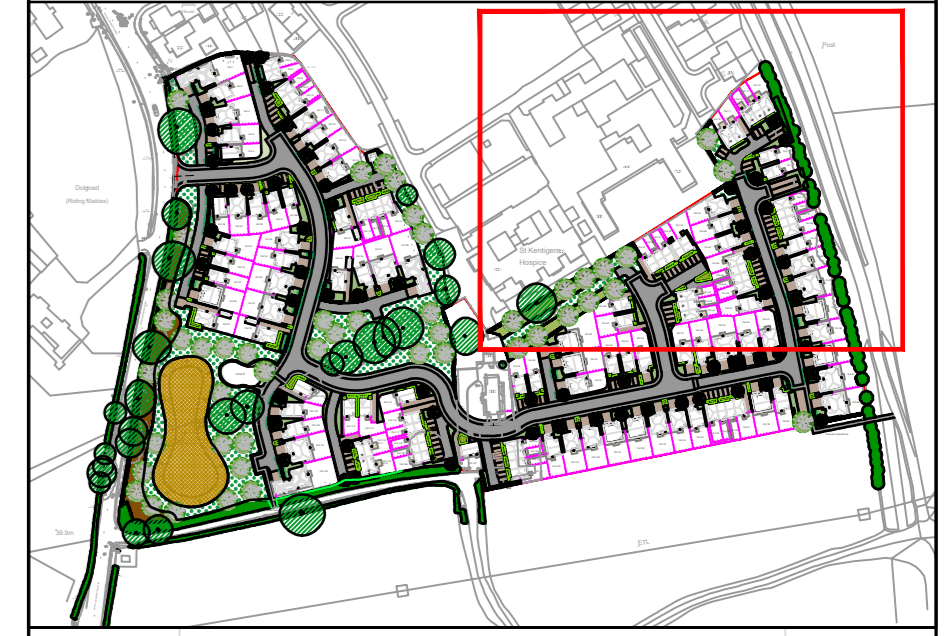
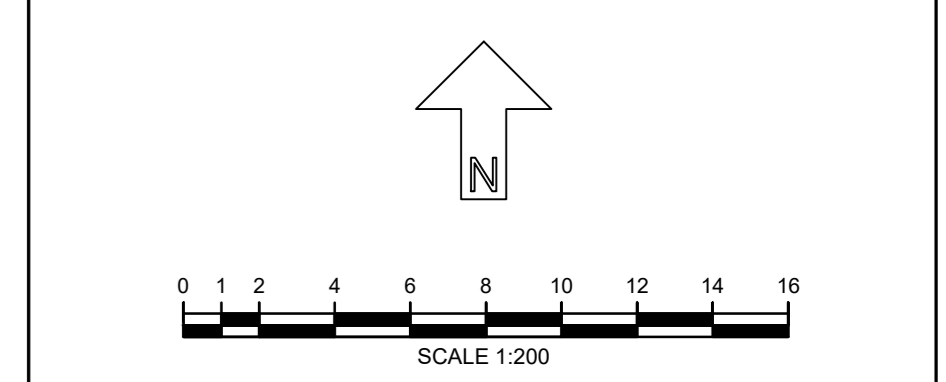
Ascerta
 Landscape | Trees | Ecology
 t: 0845 463 4404
 e: info@landscapetreeseecology.com
 www.landscapetreeseecology.com

CLIENT: Castle Green Homes
 PROJECT: Upper Denbigh Road, St Asaph
 DRAWING TITLE: Landscape Layout
 Sheet 2 of 4
 SCALE: 1:200 @ A0
 DRAWING No:
 DRAWN BY: CN
 CHD BY: CP
 DATE: 21/09/2021
 P: 1521.21.03



DO NOT SCALE
 ALL COORDINATES RELATED TO LOCAL GRID LOCATED TO OS NG BY BEST FIT TO DETAIL, EXTRACTED FROM OS DIGITAL DATA.
 © This drawing, including the design and technical information contained on it, is the property of Ascerta. The drawing may only be used for the specific purpose for which it has been intended and may not be reproduced or copied without prior permission.

- Landscape Layout Key:**
- Site Boundary
 - Existing trees and vegetation to be retained and protected during the works.
 - Existing hedgerow to be retained.
 - Proposed ornamental planting on 400mm depth of topsoil with 75mm bark mulch.
 - Proposed native tree planting, tree pit and stake as detailed in the specification.
 - Small ornamental tree planting, tree pit and stake as detailed in the specification.
 - Proposed single or mixed native hedgerow planted in a double staggered row at 0.3m centres and 0.3 offset. Bare root transplants, each with a 60cm high Tubex shrub shelter, two cable ties and a timber stake.
 - Proposed single species formal hedge planted in a single row at 0.33 centres (3 no. plants per linear metre). Container transplants.
 - Front gardens to be turfed on 150mm topsoil.
 - Public open space to be sown with Germinal Aber-Susian mix, or similar approved, to be sown at a rate of 40g/m2 on 150mm topsoil.
 - Public open space to be sown with Germinal Eco Species Rich Lawn mix, or similar approved, to be sown at a rate of 10g/m2 on 150mm topsoil.
 - Native woodland planting to be planted as 60-80cm whip planting at 2m centres, for additional wildlife habitat.
 - Native scrub planting to be planted as 60-80cm whip planting at 1m centres, for additional wildlife habitat.
 - Wildflower seeding, Germinal RE3 River Floodplain / Water Meadow (MGB Grassland), to the existing water course to public open space to be sown at 5g/m2.
- Paving Key:**
- Main roads, private drives and public footpaths including raised/ feature junctions and ramps/ transition strips to be tarmac.
 - Plot driveways and parking spaces- Private driveways and parking spaces in Mona Precast Monopave concrete block paving in 'Brendie', with contrasting blocks in 'Charcoal' to demark parking spaces or similar approved.
 - Private pathways and patios to be Mona Precast Monopave Slab concrete paving slabs in 'Buff' or similar approved.
- Boundary key:**
- 1.8m high screen wallfence
 - 1.8m timber close boarded fence to side and rear



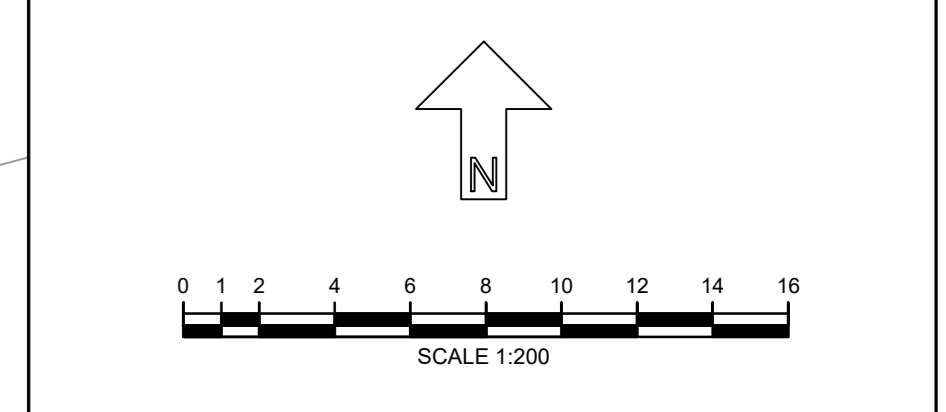
St Kentigern
 Hospice

REV	DESCRIPTION	DATE
<p>Ascerta Landscape Trees Ecology t: 0845 463 4404 e: info@landscapetreecology.com www.landscapetreecology.com</p>		
<p>CLIENT: Castle Green Homes PROJECT: Upper Denbigh Road, St Asaph DRAWING TITLE: Landscape Layout Sheet 3 of 4 SCALE: 1:200 @ A0 DRAWING No: REV DRAWN BY: CN CHD BY: CP DATE: 21/09/2021 P: 1521.21.03</p>		



DO NOT SCALE
 ALL COORDINATES RELATED TO LOCAL GRID LOCATED TO OS NG BY BEST FIT TO DETAIL, EXTRACTED FROM OS DIGITAL DATA.
 © This drawing, including the design and technical information contained on it, is the property of Ascerta. The drawing may only be used for the specific purpose for which it has been intended and may not be reproduced or copied without prior permission.

- Landscape Layout Key:**
- Site Boundary
 - Existing trees and vegetation to be retained and protected during the works.
 - Existing hedgerow to be retained.
 - Proposed ornamental planting on 400mm depth of topsoil with 75mm bark mulch.
 - Proposed native tree planting, tree pit and stake as detailed in the specification.
 - Small ornamental tree planting, tree pit and stake as detailed in the specification.
 - Proposed single or mixed native hedgerow planted in a double staggered row at 0.33m centres and 0.3 offset. Bare root transplants, each with a 60cm high Tubex shrub shelter, two cable ties and a timber stake.
 - Proposed single species formal hedge planted in a single row at 0.33 centres (3 no. plants per linear metre). Container transplants.
 - Front gardens to be turfed on 150mm topsoil.
 - Public open space to be sown with Germinat AberSustain mix, or similar approved, to be sown at a rate of 40g/m2 on 150mm topsoil.
 - Public open space to be sown with Germinat Eco Species Rich Lawn mix, or similar approved, to be sown at a rate of 10g/m2 on 150mm topsoil.
 - Native woodland planting to be planted as 60-80cm whip planting at 2m centres, for additional wildlife habitat.
 - Native scrub planting to be planted as 60-80cm whip planting at 1m centres, for additional wildlife habitat.
 - Wildflower seeding, Germinat RE3 River Floodplain / Water Meadow (MGS Grassland), to the existing water course to public open space to be sown at 5g/m2.
- Paving Key:**
- Main roads, private drives and public footpaths including raised/ feature junctions and ramps/ transition strips to be tarmac.
 - Plot driveways and parking spaces- Private driveways and parking spaces in Mona Precast Monopave concrete block paving in 'Brendle', with contrasting blocks in 'Charcoal' to demark parking spaces or similar approved.
 - Private pathways and patios to be Mona PreCast Monopave Slab concrete paving slabs in 'Buff' or similar approved.
- Boundary key:**
- 1.8m high screen wall/fence
 - 1.8m timber close boarded fence to side and rear



REV	DESCRIPTION	DATE
<h2 style="margin: 0;">Ascerta</h2> <p style="margin: 0;">Landscape Trees Ecology</p> <p style="margin: 0;">t: 0845 463 4404</p> <p style="margin: 0;">e: info@landscapetreeseecology.com</p> <p style="margin: 0;">www.landscapetreeseecology.com</p>		
<p>CLIENT: Castle Green Homes</p> <p>PROJECT: Upper Denbigh Road, St Asaph</p> <p>DRAWING TITLE: Landscape Layout</p> <p>SHEET: Sheet 4 of 4</p> <p>SCALE: 1:200 @ A0</p> <p>DRAWING No: _____</p> <p>REV: _____</p> <p>DRAWN BY: CN</p> <p>CHKD BY: CP</p> <p>DATE: 21/09/2021</p> <p>P: 1521.21.03</p>		