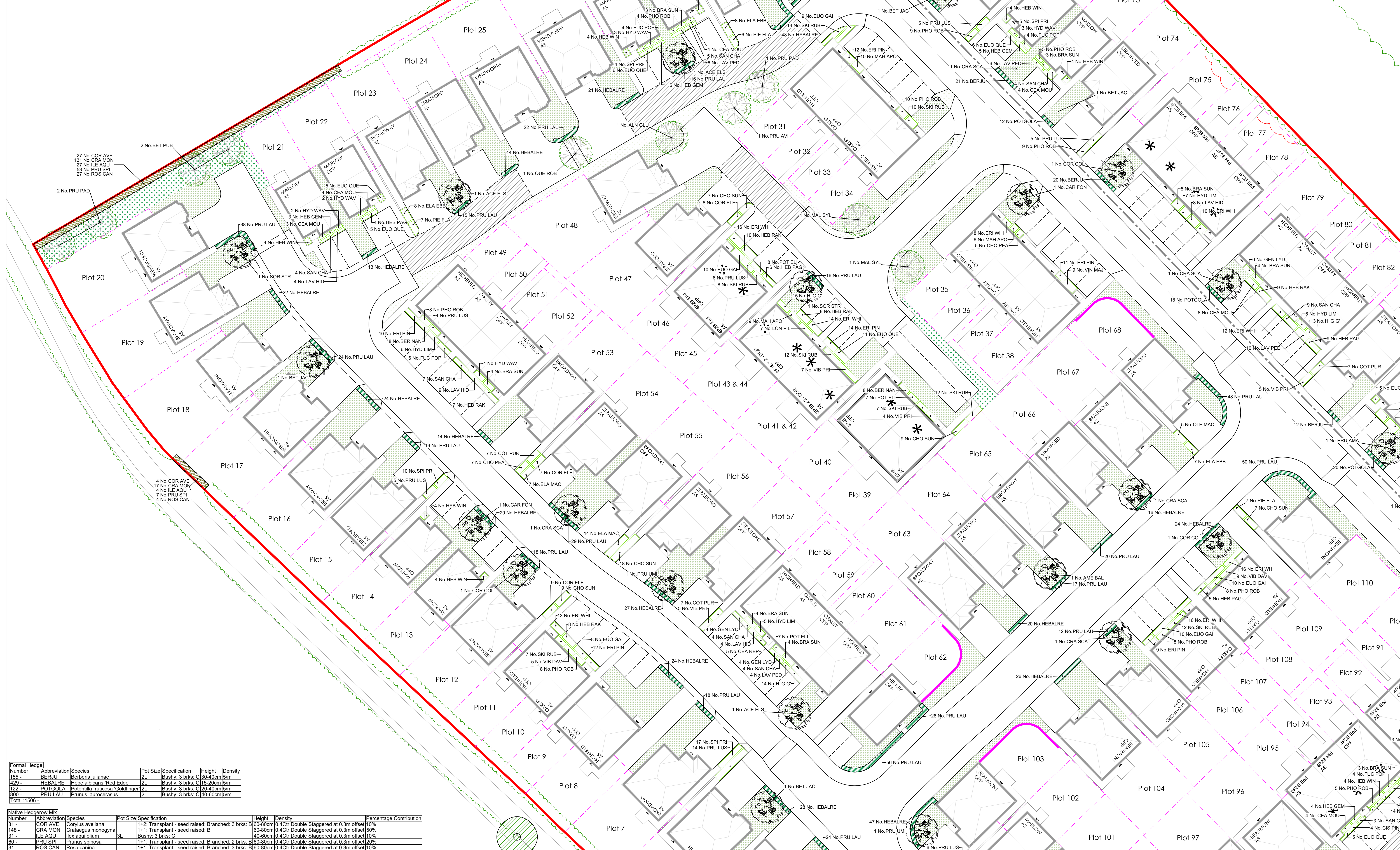


Number	Abbreviation	Species	Pot Size	Specification	Density	Area
16-	BER NAN	Berberis thunbergii 'Atrorubra'	3L	Branched 4 brks: C	4/m <sup>2</sup>	3.6053m <sup>2</sup>
13-	BRA SUN	Brachyotyle 'Sunshine'	3L	Branched 4 brks: C	2/m <sup>2</sup>	13.5425m <sup>2</sup>
32-	CEA MOU	Ceanothus 'Blue Mound'	3L	Branched 5 brks: C	3/m <sup>2</sup>	9.2185m <sup>2</sup>
5-	CEA REP	Ceanothus thyrsiflorus repens	3L	Bushy 5 brks: C	3/m <sup>2</sup>	13.621m <sup>2</sup>
16-	CHO PEA	Choisy 'Azur Pearl'	3L	Bushy 5 brks: C	3/m <sup>2</sup>	4.6581m <sup>2</sup>
50-	CHO SUN	Choisy 'Sundance'	3L	Bushy 4 brks: C	3/m <sup>2</sup>	15.9982m <sup>2</sup>
4-	CIS PIN	Cistus 'Silver Pink'	3L	Bushy 4 brks: C	3/m <sup>2</sup>	11.844m <sup>2</sup>
24-	COR ELE	Cornus alba 'Elegantissima'	3L	Branched 4 brks: C	3/m <sup>2</sup>	17.9384m <sup>2</sup>
21-	GOT PUR	Cornus coccinea 'Royal Purple'	3L	Branched 3 brks: C	3/m <sup>2</sup>	6.7383m <sup>2</sup>
21-	ELA MAC	Elaeagnus pungens 'Maculata'	3L	Branched 3 brks: C	3/m <sup>2</sup>	6.7601m <sup>2</sup>
31-	ELA EBB	Elaeagnus x ebbingei	3L	Branched 3 brks: C	3/m <sup>2</sup>	9.1133m <sup>2</sup>
6-	ELA LIM	Elaeagnus x ebbingei 'Limelight'	3L	Branched 3 brks: C	2/m <sup>2</sup>	2.8456m <sup>2</sup>
8-	ERI PIN	Erica carnea 'Springwood Pink'	3L	Bushy C	5/m <sup>2</sup>	15.397m <sup>2</sup>
103-	ERI WHI	Erica carnea 'Springwood White'	3L	Bushy C	5/m <sup>2</sup>	20.2882m <sup>2</sup>
57-	EYO GAI	Euonymus fortunei 'Emerald Gaiety'	3L	Bushy 7 brks: C	3/m <sup>2</sup>	18.1058m <sup>2</sup>
55-	EYO QUE	Euonymus fortunei 'Silver Queen'	3L	Bushy 5 brks: C	4/m <sup>2</sup>	12.8515m <sup>2</sup>
19-	FUC POP	Fuchsia 'Mrs Foppie'	3L	Bushy 5 brks: C	3/m <sup>2</sup>	15.1673m <sup>2</sup>
19-	GEN LYD	Genista lydia	3L	Bushy 5 brks: C	3/m <sup>2</sup>	5.8612m <sup>2</sup>
99-	H G G	Hebe 'Green Globe'	3L	Bushy 7 brks: C	7/m <sup>2</sup>	13.6266m <sup>2</sup>
58-	HEB WIN	Hebe 'Mrs Winder'	3L	Bushy 5 brks: C	3/m <sup>2</sup>	17.2935m <sup>2</sup>
26-	HEB GEM	Hebe 'White Gem'	3L	Bushy 5 brks: C	3/m <sup>2</sup>	7.7153m <sup>2</sup>
30-	HEB PAG	Hebe pingulifolia 'Pagei'	3L	Bushy 5 brks: C	3/m <sup>2</sup>	9.1884m <sup>2</sup>
28-	HEB RAK	Hebe rakensis	3L	Bushy 5 brks: C	3/m <sup>2</sup>	17.3284m <sup>2</sup>
20-	HYD WAV	Hydrangea macrophylla 'Blue Wave'	3L	Branched 5 brks: C	2/m <sup>2</sup>	7.5521m <sup>2</sup>
28-	HYD LIM	Hydrangea paniculata 'Little Lime'	3L	Branched 3 brks: C	3/m <sup>2</sup>	8.6503m <sup>2</sup>
30-	LAV HID	Lavandula angustifolia 'Hiscole'	3L	Bushy 5 brks: C	3/m <sup>2</sup>	9.3772m <sup>2</sup>
44-	LAV PED	Lavandula stoechas pedunculata	3L	Bushy 5 brks: C	4/m <sup>2</sup>	10.5223m <sup>2</sup>
17-	LON PIL	Lonicera pileata	3L	Bushy 6 brks: C	3/m <sup>2</sup>	5.1799m <sup>2</sup>
36-	MAH APO	Manisotum aquilinum 'Apollo'	3L	Branched 2 brks: C	4/m <sup>2</sup>	8.4234m <sup>2</sup>
5-	OLE MAC	Oleaster macdonia	3L	Bushy 4 brks: C	2/m <sup>2</sup>	2.3096m <sup>2</sup>
83-	PHO ROB	Photinia x fraseri 'Little Red Robin'	3L	Bushy 6 brks: C	4/m <sup>2</sup>	19.3855m <sup>2</sup>
20-	PIE FLA	Pieris 'Forest Flame'	3L	Bushy 3 brks: C	3/m <sup>2</sup>	6.6073m <sup>2</sup>
22-	POT ELI	Potentilla fruticosa 'Elizabeth'	3L	Bushy 4 brks: C	4/m <sup>2</sup>	5.1917m <sup>2</sup>
45-	PRU LUS	Prunus lusitana	3L	Bushy 4 brks: C	2/m <sup>2</sup>	20.4656m <sup>2</sup>
45-	SAN CHA	Santolina chamaecyparissus	3L	Bushy 7 brks: C	3/m <sup>2</sup>	13.3548m <sup>2</sup>
92-	SKI RUB	Skimmia japonica 'Rubella'	3L	Bushy 3 brks: C	4/m <sup>2</sup>	11.9147m <sup>2</sup>
60-	SPI PRI	Spiraea japonica 'Little Princess'	2L	Bushy 5 brks: C	4/m <sup>2</sup>	14.1482m <sup>2</sup>
24-	VIB DAV	Viburnum davidii	3L	Bushy 3 brks: C	3/m <sup>2</sup>	7.5482m <sup>2</sup>
21-	VIB PRI	Viburnum tinus 'Eve Price'	3L	Bushy 4 brks: C	2/m <sup>2</sup>	8.6399m <sup>2</sup>
9-	VIN MAJ	Vinca major	3L	Several Shoots 3 brks: C	3/m <sup>2</sup>	2.7688m <sup>2</sup>
Total 1465						Total 399.4647m <sup>2</sup>

Number	Abbreviation	Species	Specification	Height	Girth
3-	ACE ELS	Acer campestre 'Elsrijk'	Selected Standard 4 brks: 2x: RB: Clear Stem min 200cm	300-350cm	10-12cm
3-	ALN GLU	Alnus glutinosa	Heavy Standard 5 brks: 3x: RB: Clear Stem min 200cm	350-425cm	12-14cm
3-	AME BAL	Amelanchier 'Ballarina'	Selected Standard 4 brks: 2x: RB: Clear Stem 175-200cm	300-350cm	10-12cm
3-	BET PUB	Betula pubescens	Heavy Standard 5 brks: 3x: RB: Clear Stem 175-200cm	350-425cm	12-14cm
3-	BET JAC	Betula utilis jacquemontii	Selected Standard 5 brks: 2x: RB: Clear Stem 175-200cm	300-350cm	10-12cm
2-	CAR FON	Carpinus betulus 'Frans Fontaine'	Selected Standard 4 brks: 2x: RB: Clear Stem 175-200cm	300-350cm	10-12cm
3-	COR COL	Corulus columna	Selected Standard 4 brks: 2x: RB: Clear Stem 175-200cm	300-350cm	10-12cm
3-	CRA SCA	Crataegus laevigata 'Paul's Scarlet'	Selected Standard 4 brks: 2x: RB: Clear Stem 175-200cm	300-350cm	10-12cm
2-	MAL SYL	Malus sylvestris	Heavy Standard 5 brks: 3x: RB: Clear Stem 175-200cm	350-425cm	12-14cm
2-	PRU AMA	Prunus 'Amanogawa'	Selected Standard 4 brks: C: Clear Stem 100-150cm	300-350cm	10-12cm
3-	PRU LMI	Prunus 'Linnecoe'	Selected Standard 4 brks: 2x: RB: Clear Stem 175-200cm	300-350cm	10-12cm
1-	PRU AVI	Prunus avium	Heavy Standard 5 brks: 3x: RB: Clear Stem 175-200cm	350-425cm	12-14cm
3-	PRU PAD	Prunus padus	Heavy Standard 5 brks: 3x: RB: Clear Stem 175-200cm	350-425cm	12-14cm
1-	QUE ROB	Quercus robur	Heavy Standard 5 brks: 3x: RB: Clear Stem 175-200cm	350-425cm	12-14cm
1-	SOR AUC	Sorbus aucuparia	Heavy Standard 5 brks: 3x: RB: Clear Stem 175-200cm	350-425cm	12-14cm
2-	SOR STR	Sorbus aucuparia 'Streetwise'	Selected Standard 4 brks: 2x: RB: Clear Stem 175-200cm	300-350cm	10-12cm
Total 43					



Number	Abbreviation	Species	Pot Size	Specification	Height	Density
195-	BER AU	Berberis julianae	2L	Bushy 3 brks: C	15-20cm	5/m
429-	HEBALRE	Hebe albicans 'Red Edge'	2L	Bushy 3 brks: C	15-20cm	5/m
122-	POTGOLA	Potentilla fruticosa 'Goldfinger'	2L	Bushy 3 brks: C	20-40cm	5/m
800-	PRU LAU	Prunus laurocerasus	2L	Bushy 3 brks: C	140-60cm	5/m
Total 1506						

Number	Abbreviation	Species	Pot Size	Specification	Height	Density	Percentage Contribution	
31-	COR AVE	Corvus avellana	1+2	Transplant - seed raised: Branched: 3 brks: B	60-80cm	0.4C/D	Double Staggered at 0.3m offset	10%
148-	CRA MON	Crataegus monogyna	1+1	Transplant - seed raised: B	60-80cm	0.4C/D	Double Staggered at 0.3m offset	50%
31-	ILE AOU	Ilex aquifolium	3L	Bushy: 3 brks: C	40-60cm	0.4C/D	Double Staggered at 0.3m offset	10%
60-	PRU SPI	Prunus spinosa	1+1	Transplant - seed raised: Branched: 2 brks: B	60-80cm	0.4C/D	Double Staggered at 0.3m offset	20%
31-	ROS CAN	Rosa canina	1+1	Transplant - seed raised: Branched: 3 brks: B	60-80cm	0.4C/D	Double Staggered at 0.3m offset	10%
Total 301								

DO NOT SCALE

ALL COORDINATES RELATED TO LOCAL GRID LOCATED TO OS N20 BY BEST FIT TO DETAIL. EXTRACTED FROM OS DIGITAL DATA.

This drawing, including the design and technical information contained on it, is the property of Ascerta. The drawing may only be used for the specific purpose for which it has been intended and may not be reproduced or copied without prior permission.

**Planting Plan Key:**

- Site Boundary
- Existing trees and hedges to be retained and protected during the works.
- Existing trees and hedges to be removed.
- Proposed ornamental planting on 400mm depth of topsoil with 75mm bark mulch.
- Proposed native tree planting, tree pit and double staking as detailed in the specification.
- Small ornamental tree/ large shrub planting, tree pit and double staking as detailed in the specification.
- Proposed single or mixed native hedgerow planted in a double staggered row at 0.4m centres and 0.3 offset. Bare root transplants with shelter guard tubes and stakes.
- Proposed single/mixed native species formal hedge planted in a single row at 0.2 centres. Container transplants.
- Front gardens to be turfed on 150mm topsoil.
- Public open space to be sown with Geminal Aberystwyth mix, or similar approved, to be sown at a rate of 40g/m<sup>2</sup> on 150mm topsoil.
- Public open space to be sown with Geminal Eco Species Rich Lawn mix, or similar approved, to be sown at a rate of 10g/m<sup>2</sup> on 150mm topsoil.

updated to "...Rev H"

27/07/21

DATE

Sheet 1

NTS

CLIENT: Castle Green Homes

PROJECT: Land Adj. Ysgol Pendref, Denbigh

DRAWING TITLE: Planting Plan (Sheet 1 of 3)

SCALE: 1:200 @ A0

DRAWING No: [ ]

REV: [ ]

DRAWN BY: CHD

DATE: 26/05/2021

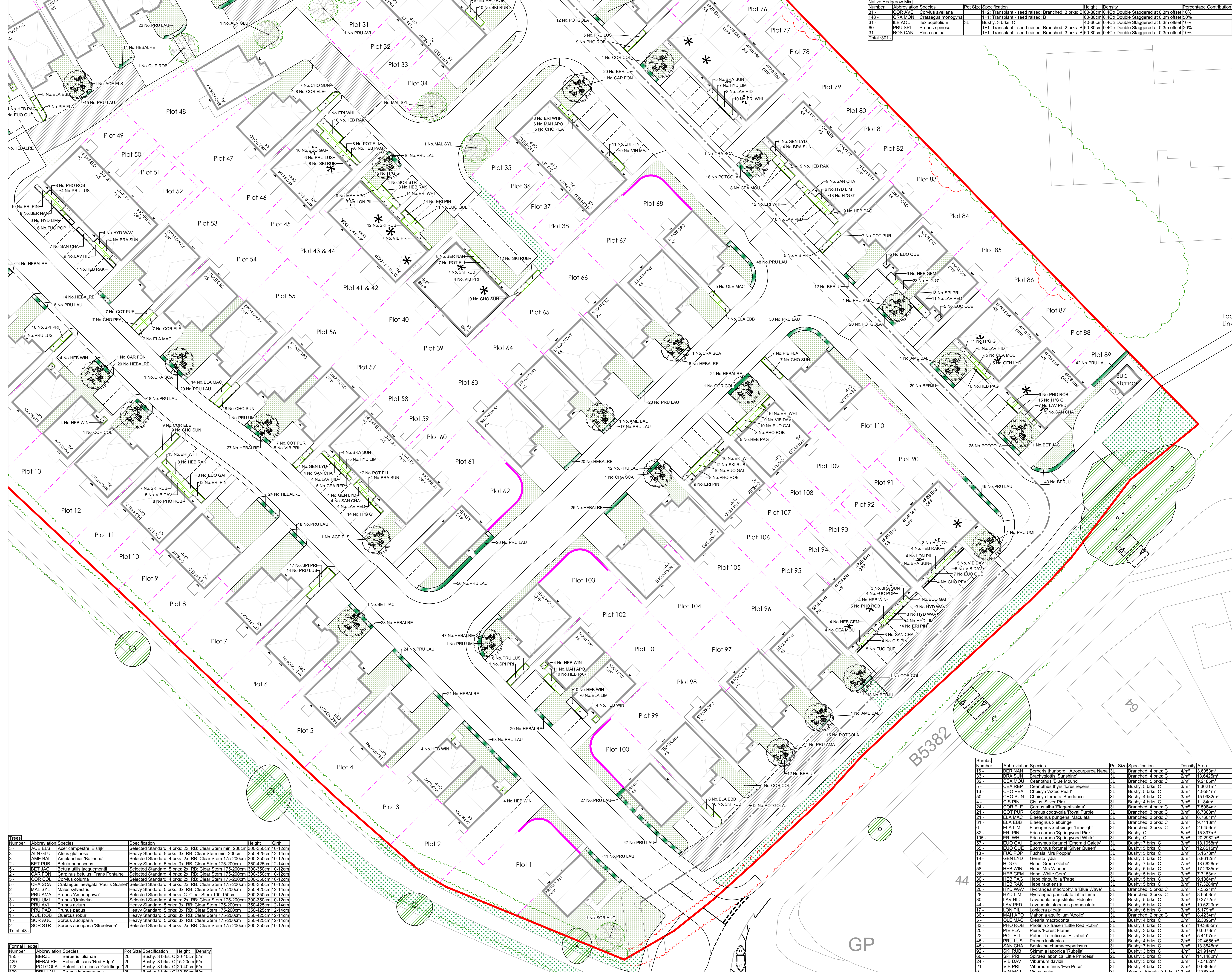
P: 1486.21.04

REV: [ ]

**Ascerta**  
Landscape | Trees | Ecology

t 0845 463 4404  
e: info@landscapetreecology.com  
www.landscapetreecology.com





Native Hedgerow	Number	Abbreviation	Species	Pot Size	Specification	Height	Density	Percentage Contribution
	31	COR AVE	Corylus avellana	1+1	Transplant - seed raised: Branched: 3 brks: B	60-80cm	0.4Cr Double Staggered at 0.3m offset	10%
	148	CRA MON	Crataegus monogyna	1+1	Transplant - seed raised: B			
	31	ILE AGU	Ilex aquifolium	3L	Bushy: 3 brks: C	40-60cm	0.4Cr Double Staggered at 0.3m offset	10%
	60	PRU SPO	Prunus spinosa	1+1	Transplant - seed raised: Branched: 2 brks: B	60-80cm	0.4Cr Double Staggered at 0.3m offset	10%
	31	ROS CAN	Rosa canina	1+1	Transplant - seed raised: Branched: 3 brks: B	60-80cm	0.4Cr Double Staggered at 0.3m offset	10%
	Total	301						

- DO NOT SCALE** ALL COORDINATES RELATED TO LOCAL GRID LOCATED TO OS NG BY BEST FIT TO DETAIL EXTRACTED FROM OS DIGITAL DATA.
- This drawing, including the design and technical information contained on it, is the property of Ascerta. The drawing may only be used for the specific purpose for which it has been intended and may not be reproduced or copied without prior permission.
- Planting Plan Key:**
- Site Boundary
  - Existing trees and hedgerows to be retained and protected during the works.
  - Existing trees and hedgerows to be removed.
  - Proposed ornamental planting on 400mm depth of topsoil with 75mm bark mulch.
  - Proposed native tree planting, tree pit and double staking as detailed in the specification.
  - Small ornamental tree/ large shrub planting, tree pit and double staking as detailed in the specification.
  - Proposed single or mixed native hedgerow planted in a double staggered row at 0.4m centres and 0.3 offset. Bare root transplants with shelter guard tubes and stakes.
  - Proposed single/mixed native species formal hedge planted in a single row at 0.2 centres. Container transplants.
  - Front gardens to be turfed on 150mm topsoil.
  - Public open space to be sown with Germinol Aberystwyth mix, or similar approved, to be sown at a rate of 40g/m<sup>2</sup> on 150mm topsoil.
  - Public open space to be sown with Germinol Eco Species Rich Lawn mix, or similar approved, to be sown at a rate of 10g/m<sup>2</sup> on 150mm topsoil.

Number	Abbreviation	Species	Specification	Height	Density
3-	ACE ELS	Acer campestre 'Eranik'	Selected Standard: 4 brks: 2x: RB: Clear Stem min. 200cm	300-350cm	10-12cm
3-	ALN GLU	Alnus glutinosa	Heavy Standard: 5 brks: 3x: RB: Clear Stem min. 200cm	350-425cm	12-14cm
3-	AME BAL	Ameilanchier 'Battersea'	Selected Standard: 4 brks: 2x: RB: Clear Stem 175-200cm	300-350cm	10-12cm
2-	BET PUB	Betula pubescens	Heavy Standard: 5 brks: 3x: RB: Clear Stem 175-200cm	350-425cm	12-14cm
2-	BET JAC	Betula utilis 'Jaquetmonti'	Selected Standard: 5 brks: 2x: RB: Clear Stem 175-200cm	300-350cm	10-12cm
2-	CAR FON	Carpinus betulus 'Frans Fontaine'	Selected Standard: 4 brks: 2x: RB: Clear Stem 175-200cm	300-350cm	10-12cm
2-	COR COL	Corylus colurna	Selected Standard: 4 brks: 2x: RB: Clear Stem 175-200cm	300-350cm	10-12cm
2-	CRA SCA	Crataegus lanugosa 'Paul's Scarlet'	Selected Standard: 4 brks: 2x: RB: Clear Stem 175-200cm	300-350cm	10-12cm
2-	MAL SYL	Malus sylvestris	Heavy Standard: 5 brks: 3x: RB: Clear Stem 175-200cm	350-425cm	12-14cm
2-	PRU AMA	Prunus 'Amanogawa'	Selected Standard: 4 brks: C: Clear Stem 100-150cm	300-350cm	10-12cm
3-	PRU LUI	Prunus 'Limegold'	Selected Standard: 4 brks: 2x: RB: Clear Stem 175-200cm	300-350cm	10-12cm
1-	PRU AVI	Prunus avium	Heavy Standard: 5 brks: 3x: RB: Clear Stem 175-200cm	350-425cm	12-14cm
3-	PRU PAD	Prunus padus	Heavy Standard: 5 brks: 3x: RB: Clear Stem 175-200cm	350-425cm	12-14cm
1-	QUE ROB	Quercus robur	Heavy Standard: 5 brks: 3x: RB: Clear Stem 175-200cm	350-425cm	12-14cm
1-	SOR AUC	Sorbus aucuparia	Heavy Standard: 5 brks: 3x: RB: Clear Stem 175-200cm	350-425cm	12-14cm
2-	SOR STR	Sorbus aucuparia 'Streetwise'	Selected Standard: 4 brks: 2x: RB: Clear Stem 175-200cm	300-350cm	10-12cm
Total	43				

Number	Abbreviation	Species	Pot Size	Specification	Height	Density
155-	BER LIJ	Berberis julianae	2L	Bushy: 3 brks: C	30-40cm	5m
429-	HEB ALB	Hebe albicans 'Red Edge'	2L	Bushy: 3 brks: C	15-20cm	5m
122-	POT GOL	Potentilla fruticosa 'Goldfinger'	2L	Bushy: 3 brks: C	20-40cm	5m
800-	PRU LAU	Prunus laurocerasus	2L	Bushy: 3 brks: C	40-60cm	5m
Total	1506					

Shrub Number	Abbreviation	Species	Pot Size	Specification	Density	Area
16	BER NAR	Berberis thunbergii 'Atropurpurea Nana'	3L	Branched: 4 brks: C	4m <sup>2</sup>	3.6053m <sup>2</sup>
33	BRA SUN	Brachyglottis 'Sunshine'	3L	Branched: 4 brks: C	2m <sup>2</sup>	13.6428m <sup>2</sup>
32	CEA MOU	Ceanothus 'Blue Mound'	3L	Branched: 5 brks: C	3m <sup>2</sup>	9.2185m <sup>2</sup>
5	CEA PEA	Ceanothus thyrsiflorus repens	3L	Bushy: 5 brks: C	3m <sup>2</sup>	1.9621m <sup>2</sup>
16	CHO PEA	Choisya 'Aztac Pearl'	3L	Bushy: 5 brks: C	3m <sup>2</sup>	4.9581m <sup>2</sup>
50	CHO SUN	Choisya ternata 'Sundance'	3L	Bushy: 4 brks: C	3m <sup>2</sup>	15.9982m <sup>2</sup>
4	CIS PIN	Cornus 'Silver Pink'	3L	Bushy: 4 brks: C	3m <sup>2</sup>	1.134m <sup>2</sup>
24	COR ELE	Cornus alba 'Elegantissima'	3L	Branched: 4 brks: C	3m <sup>2</sup>	7.5984m <sup>2</sup>
21	COT PUR	Cotinus coggygria 'Royal Purple'	3L	Branched: 3 brks: C	3m <sup>2</sup>	6.7383m <sup>2</sup>
21	ELA MAC	Elaeagnus pungens 'Maculata'	3L	Branched: 3 brks: C	3m <sup>2</sup>	6.7601m <sup>2</sup>
51	ELA EBB	Elaeagnus x ebbingei	3L	Branched: 3 brks: C	3m <sup>2</sup>	9.7113m <sup>2</sup>
6	ELA LIM	Elaeagnus x ebbingei 'Limegold'	3L	Branched: 3 brks: C	2m <sup>2</sup>	2.6456m <sup>2</sup>
82	ERI PIN	Erica carnea 'Springwood Pink'	3L	Bushy: C	3m <sup>2</sup>	15.397m <sup>2</sup>
105	ERI WHI	Erica carnea 'Springwood White'	3L	Bushy: C	3m <sup>2</sup>	20.2982m <sup>2</sup>
57	EUI GAI	Eucrymus fortunei 'Emerald Galety'	3L	Bushy: 7 brks: C	3m <sup>2</sup>	18.1058m <sup>2</sup>
55	EUI QUE	Eucrymus fortunei 'Silver Queen'	3L	Bushy: 5 brks: C	4m <sup>2</sup>	12.8515m <sup>2</sup>
18	FUC POP	Fuchsia 'Mrs Popple'	3L	Bushy: 5 brks: C	3m <sup>2</sup>	5.1737m <sup>2</sup>
19	GEN LYD	Genista Lydia	3L	Bushy: 5 brks: C	3m <sup>2</sup>	5.8612m <sup>2</sup>
99	H G S	Hebe 'Green Goddess'	3L	Bushy: 5 brks: C	3m <sup>2</sup>	13.6626m <sup>2</sup>
26	HEB WIN	Hebe 'Mrs Winslet'	3L	Bushy: 5 brks: C	3m <sup>2</sup>	17.2335m <sup>2</sup>
26	HEB GEM	Hebe 'White Gem'	3L	Bushy: 5 brks: C	3m <sup>2</sup>	7.7153m <sup>2</sup>
20	HEB PAG	Hebe pingii 'Page'	3L	Bushy: 5 brks: C	3m <sup>2</sup>	9.1864m <sup>2</sup>
56	HEB RAK	Hebe rakensis	3L	Bushy: 5 brks: C	3m <sup>2</sup>	17.3284m <sup>2</sup>
20	HYD WAV	Hydrangea macrophylla 'Blue Wave'	3L	Branched: 5 brks: C	2m <sup>2</sup>	7.5621m <sup>2</sup>
28	HYD LIM	Hydrangea paniculata 'Little Lime'	3L	Branched: 3 brks: C	3m <sup>2</sup>	8.8933m <sup>2</sup>
39	LAV HID	Lavandula angustifolia 'Hidcot'	3L	Bushy: 5 brks: C	3m <sup>2</sup>	17.3722m <sup>2</sup>
17	LAV PED	Lavandula stoechas pedunculata	2L	Bushy: 5 brks: C	4m <sup>2</sup>	10.5223m <sup>2</sup>
44	LON PIL	Lonicera pileata	3L	Bushy: 5 brks: C	3m <sup>2</sup>	5.179m <sup>2</sup>
36	MAH APO	Matrona aequilum 'Apollo'	3L	Branched: 2 brks: C	4m <sup>2</sup>	8.4234m <sup>2</sup>
5	OLE MAC	Oleandra macrodonata	3L	Bushy: 4 brks: C	2m <sup>2</sup>	2.3096m <sup>2</sup>
83	PHO ROB	Photinia x rasan 'Little Red Robin'	3L	Bushy: 5 brks: C	4m <sup>2</sup>	19.3865m <sup>2</sup>
21	PIE FLA	Pieris 'Forest Flame'	3L	Bushy: 5 brks: C	3m <sup>2</sup>	6.6074m <sup>2</sup>
22	POT ELI	Potentilla fruticosa 'Elizabeth'	2L	Bushy: 3 brks: C	4m <sup>2</sup>	5.4197m <sup>2</sup>
45	PRU LUS	Prunus laurifolia	3L	Bushy: 4 brks: C	2m <sup>2</sup>	20.4856m <sup>2</sup>
45	SAN CHA	Santolina chamaecyparissus	3L	Bushy: 2 brks: C	3m <sup>2</sup>	13.5656m <sup>2</sup>
92	SKI RUB	Skimmia japonica 'Rubella'	3L	Bushy: 3 brks: C	4m <sup>2</sup>	21.914m <sup>2</sup>
60	SPI PRI	Sorbaria japonica 'Little Princess'	2L	Bushy: 5 brks: C	4m <sup>2</sup>	14.1482m <sup>2</sup>
24	VIB DAV	Viburnum davidii	3L	Bushy: 3 brks: C	3m <sup>2</sup>	7.5457m <sup>2</sup>
21	VIB PRI	Viburnum tinus 'Eve Price'	3L	Bushy: 4 brks: C	2m <sup>2</sup>	9.6399m <sup>2</sup>
9	VIN MAJ	Vinca major	3L	Several Shoots: 3 brks: C	3m <sup>2</sup>	2.768m <sup>2</sup>
Total	1465					399.4647m <sup>2</sup>

A updated to "... Rev H" 27/07/21  
REV DESCRIPTION DATE



**Ascerta**  
Landscape | Trees | Ecology  
t: 0845 463 4404  
e: info@landscapetreecology.com  
www.landscapetreecology.com

CLIENT: Castle Green Homes  
PROJECT: Land Adj. Ysgol Pendref, Denbigh  
DRAWING TITLE: Planting Plan (Sheet 2 of 3)  
SCALE: 1:200 @ A0 DRAWING No: REV: A  
DRAWN BY: CHD BY: DATE: 26/05/2021 P: 1486.21.04  
CN CP



## LANDSCAPE AND MAINTENANCE SPECIFICATION

All operations to comply with appropriate British Standards unless otherwise stated on drawings or in the specification.

### GENERAL TREATMENT OF PLANTING AREAS

Ensure that planting areas are protected from consolidation by heavy construction plant.

**For work near a retained tree:** Refer to BS 5837 *Trees in relation to design, demolition & construction - Recommendations-* Section 9 (Appendix C).

**Damage to Plants to be Retained:** If a plant is to be retained is damaged, the plant is to be repaired or replaced by the contractor at their own expense. "Damaged" means:

- The destruction of a plant the breaking of branches or roots
- The debarking of trunks or limbs
- The contamination of root zone soil or plants from drift sprays, dust or contaminated storm water
- The damage by the placement of fill or building materials within the canopy perimeter or otherwise.

#### 1) GROUND PREPARATION AND SOIL SPECIFICATION

##### Subsoil:

Before receiving topsoil, subsoil shall be loosened using appropriate equipment to a depth of 300mm. This shall be done when the subsoil is dry so as to encourage soil shattering. All stones and other objects larger than 50mm shall be removed from the prepared surface. The loosened subsoil shall be roughly levelled so that an even depth of topsoil can be achieved.

##### Topsoil (To Comply with British Standard 3882:2015 - Specification for Topsoil):

Imported topsoil shall be Multipurpose Grade as described in BS 3882:2015 and suitable for sustaining plant life. Stockpiling of soil shall be avoided whenever possible to minimise loss of physical quality, diffusion of oxygen and biological activity.

Any stockpiling shall not exceed 1.5 metres high and shall be sited so as to avoid risk of muddy water run-off into a watercourse, not exceeding 1.5 metres high.

The site of the stockpile will be prepared in advance by grading, removing rubbish and ensuring no fuel or chemicals were previously stored in area.

Topsoil shall be lightly consolidated in layers not exceeding 150mm using track laying machinery.

Soil shall not be handled in inappropriate conditions of weather and soil moisture i.e.

During or shortly after heavy precipitation

When soil is in a waterlogged condition

When the ground is frozen or covered by snow

When there are pools of water on the grounds surface.

Topsoil shall be laid to the following minimum depths:

150mm below new grass areas

300mm to rear gardens

400mm beneath new shrub areas.

Finished levels, after settlement, shall be as follows:

25mm above adjacent paving from new grassed areas and non-mulched shrub beds

75mm below adjacent paving and grass for mulched planting beds.

150mm below damp proof courses.

#### 2) GROUND CONDITIONING

40 litres of compost to be incorporated into the top 200mm of each square metre of topsoil for all ornamental shrub beds.

#### 3) PLANT AND PLANTING SPECIFICATION

All plant stock, plant handling and planting to be undertaken in accordance with the following British Standard Specifications and Code of Practice:

BS 8545:2014 'Trees: from nursery to independence in the landscape

BS 3936: Part 1 1992 Nursery stock (Specification for trees and shrubs)

BS 3936: Part 4 1984 Nursery stock (Specification for forest trees)

BS 3936: Part 9 1987 Nursery stock (Specification for bulbs, corms and tubers)

BS 3936: Part 10 1990 Nursery stock (Specification for ground cover plants)

BS 4428: 1989 Recommendations for general landscaping operations.

BS 4043: 1989 Recommendations for transplanting root-balled trees. (withdrawn)

The Code of Practice for Plant Handling 1985. (Horticultural Trades Association).

##### Plant Stock:

Plant stock to be supplied in accordance with the size and description specified ion the plant schedule and position indicated on the most current revision of the planting plan.

Plant stock shall be healthy, vigorous, free from pests and diseases and suitably hardened off for the proposed situation of planting and lifted at a time in accordance with good nursery practice. Stock shall have a well-formed fibrous root system and be free from perennial weeds. The form of trees shall be in accordance with BS 3936: Part 1:1992, Section 7, *Form of Trees*.

##### Plant Handling:

All plant materials shall be lifted, bundled, labelled, packaged, transported, temporarily stored and planted in accordance with the procedures and methods illustrated in the publication, "*Plant Handling*" (Horticultural; Trades Association) and relevant sections of BS 4043: 1989 *Transplanting Root-Balled Trees*.

##### Tree Planting:

Trees to be pit planted following supplier recommendations. Minimum pit size: Heavy standard tree 1000 x 1000 x 750mm, and Selected standard tree 900 x 900 x 700mm.

Pits to be prepared to base and sides of pit to be further scarified.

Trees to be double staked using two stakes (75mm dia.), driven into ground 300mm below bottom of pit. Base of pit to be filled with 200mm of 3:1 mix of approved topsoil / compost.

Trees to be centrally located and stem placed in an upright position. Pit to be backfilled with a 3:1 mix of an approved topsoil / compost. Backfill firmly to 50mm above previous ground level to allow for settlement. Stakes to be saw leave 600mm above soil level.

Water in same day with 50-80 litres per tree, dependant on soil conditions.

All works shall be carried out to the minimum standard according to BS 3936: 1992 Part 1 Nursery Stock. Specification for Trees and Shrubs. BS 4043: 1989 Recommendations for transplanting root-balled trees.

##### Staking:

Stake all trees with double short stakes. Stakes to be round timber with chamfered tops. Position stake close to tree on windward side and drive vertically at least 400mm into bottom of pit before planting. Backfilling: consolidate material around stake. Height of stakes: cut to approximately one third of the tree height above ground level, taking care not to damage the bark. Ties: Hessian. Tying: secure tree firmly but not rigidly to stake with at least 2 ties within 25mm of top of stake.

##### Mulch:

All shrub beds shall be spread with a medium grade bark mulch to a settled depth of 75mm. Mulch to be free from fines, weeds, disease and contaminants.

##### Ornamental shrub planting:

To be set out carefully and evenly over indicated areas. Remove plants from pots and plastic containers, plant and water in thoroughly. Shrubs shall be individually pit planted in prepared

pits sized to accommodate full spread of roots. Plants shall be evenly spaced over the planting area. Firm backfill by treading, ensuring the ground is not overly compacted and that the plant is positioned upright.

**New formal hedges** - Consistent in species, cultivar and clone to ensure a uniform hedge. To be planted in a previous prepared planting bed 0.6metre wide. Planted to be centrally in a single row at a density of 5 plants per metre. Ensure plants are planted to the correct depth to correspond to the soil mark on main stems.

Prune back to a height of 1 metres.

**Mixed native hedgerows-** To be planted in a previous prepared planting bed 1metre wide. Planted in double staggered rows at 0.4m spacings of plants and 0.3m offset of the two rows. Ensure plants are planted to the correct depth to correspond to the soil mark on main stems.

Prune back to a height of 2 metres.

##### Turfed Areas:

To be specified and laid in accordance with BS. 3936:1998 Recommendations for turf for general purposes. Turf to be Lindum Festival Turf (or similar approved). Hardwearing with a dense sward containing a mixture of 25% perennial ryegrass, 55% fescues and 20% smooth stalked meadow grass. This mix is easy to maintain and will recover well from general wear.

Turf to be laid in suitable weather conditions on a prepared bed with no weeds and a suitable slow release fertiliser applied to bed prior to laying. Turf to be watered regularly until it is well established.

##### Rear gardens:

Subsoil to be prepared to a depth of 300mm as per ground preparation and soil specification.

Topsoil to be supplied as per ground preparation and soil specification to a depth of 300mm, after gentle compaction and to be left bare in rear gardens.

##### Overseeding existing grassed areas:

Public open spaces with existing grass shall be overseeded with Germinal AberSustain mix, or similar approved. Sowing to be taken between March and October.

existing grass to be mown first to approx 25mm. Area to then be raked to break up soil and remove dead grass. Fertilise at 50gms/sq m, 10-14 days prior to seeding, sow at rate of 20g/m2 and lightly rake. First cut to be undertaken when grass reaches 50mm.

##### Wildflower Seeding:

Seed mix shall be Germinal WFG20 Eco Species Rich Lawn, or similar approved. Sowing to be taken between March and October.

Topsoil shall be cultivated to a fine tilth, be free from weeds, stones and other debris. Sow at rate of 10 g/m2 and lightly rake. First cut to be undertaken 6 weeks after sowing or when reaches 70-100mm.

#### 4) MAINTENANCE AND MANAGEMENT

Plant stock and soft landscaped areas shall be maintained for a period of five years via the developers' agent or appointed Management Company during which time the following operations shall be carried out:

##### Regular visits:

Monthly maintenance visits to include the following operations:

- Hand weed planting beds
- Remove litter
- Sweep mulch spillage
- Re-firming plant stock to ensure the new planting is all planting to upright positions.
- Adjust stakes and ties as necessary
- Prune plant stock as required to encourage good form
- Check all plant stock and report signs of pests, disease, death and damage

##### Mulch:

Top up mulch levels (using matching material) surrounding trees and within beds to 75mm at the end of the maintenance period.

##### Watering:

Plant stock to receive the following quantities of water:

Heavy Standard trees: 35 litres each month between April and September

Selected Standard trees: 30 litres each month between April and September

Shrubs and transplants: 5 litres/plant on three occasions throughout growing season.

Watering to be undertaken during the first 24 months as needed to maintain plant health.

##### Grass Maintenance:

Grass shall be cut throughout the growing season to maintain a sward of approximately 38mm. Shall be edged, watered as necessary and clippings removed.

##### Wildflower Maintenance:

Wildflower areas shall be cut 2 times a year during the late spring and after the flower season (September / October) to maintain a sward of approximately 40-70mm. The clippings shall be left in situ for 3 days to allow seed drop, then removed to prevent nutrient build up.

##### WFG20 Eco Species Rich Lawn Maintenance:

Autumn Sown: during the first year: first cut shall be early July, then monthly during August, September and October to maintain a sward of approximately 70-100mm.

Thereafter: shall be cut 2 times a year mid-July to early September to maintain a sward of approximately 70-100mm.

Spring Sown: during the first year: first cut shall be mid-September, then again during October to maintain a sward of approximately 70-100mm.

Thereafter: shall be cut 1 time a year mid-July to early September or as required leaving at least fortnight between cuts to maintain a sward of approximately 70-100mm.

The clippings shall be left in situ for 3 days to allow seed drop, then removed to prevent nutrient build up.

##### New tree/shrub planting:

Weed control by hand to ensure planting area is weed free. Check stakes and guards are in place and replace where necessary. Prune, thin and remove suckers, seedlings, dead, damaged, or diseased branches annually between October and January to avoid the bird nesting season. Replace dead / dying stock in winter.

##### Plant replacements:

All dead, dying and vandalised plant stock shall be replaced, at the landscape contractor's expense, at the end of each growing season throughout the maintenance period.

##### DO NOT SCALE

ALL COORDINATES RELATED TO LOCAL GRID LOCATED TO OS HERE BY BEST FIT TO DETAIL EXTRACTED FROM OS DIGITAL DATA

© This drawing, including the design and technical information contained on it, is the property of Ascerta. The drawing may only be used for the specific purpose for which it has been intended and may not be reproduced or copied without prior permission.

A	updated to "...Rev H"	27/07/21
REV	DESCRIPTION	DATE

**Ascerta**  
Landscape | Trees | Ecology

t: 0845 463 4404

e: info@landscapetreeseecology.com

www.landscapetreeseecology.com

CLIENT:

Castle Green Homes

PROJECT:

Land Adj. Ysgol Pendref, Denbigh

DRAWING TITLE:

Planting Plan (Sheet 3 of 3)

SCALE:	DRAWN BY:	DRAWING No:	REV:
NTS@A1	CN		
DATE:	CHKD BY:		
26/05/2021	CP	P.1486.21.04	A